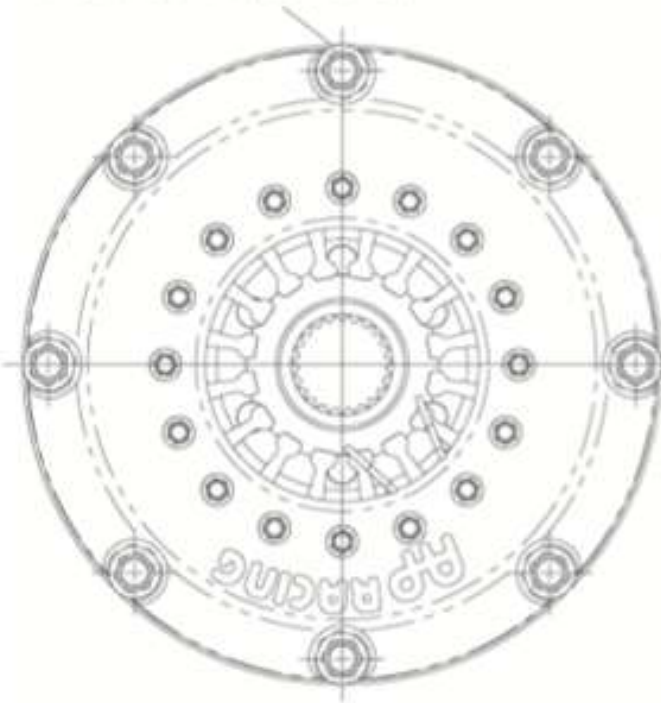


8 MOUNTING HOLES Ø8.15/8.05
TO SUIT M8 x 1.0 MOUNTING
STUDS EQUISPACED ON A
Ø154.45 P.C. MIN C/BORE Ø17.20

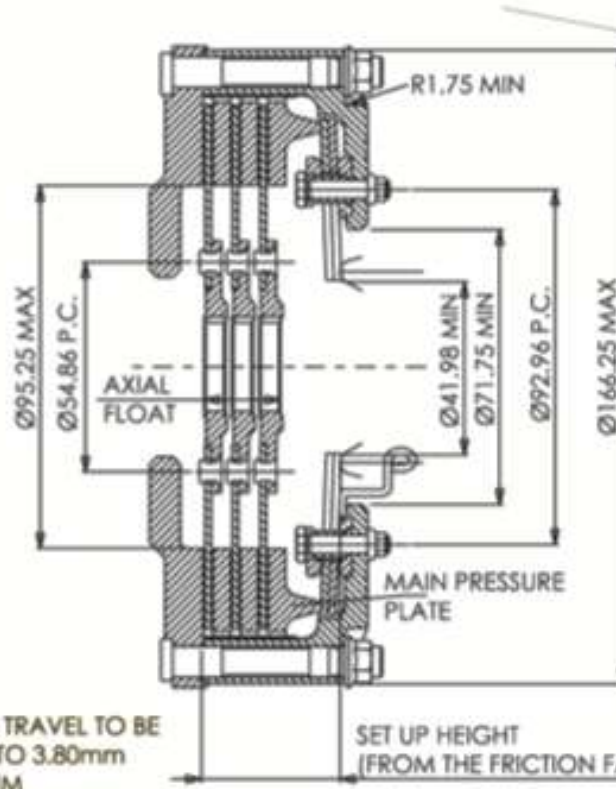
THE CLUTCH SPIGOT HAS BEEN DESIGNED TO BE
THIS DIAMETER WHEN BOLTED TO THE FLYWHEEL.
BEFORE FITTING (WITH THE INSTALLATION WIRE IN PLACE)
THIS DIAMETER MAY BE SLIGHTLY REDUCED

Volant plat

Volant Décalé



HUB ENVELOPE
(FROM FLYWHEEL FRICTION FACE)

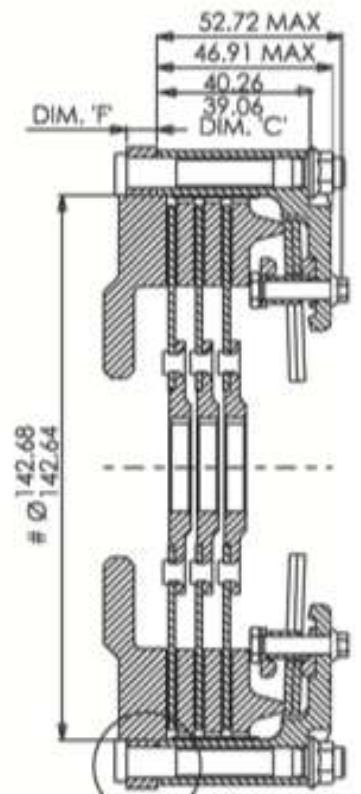
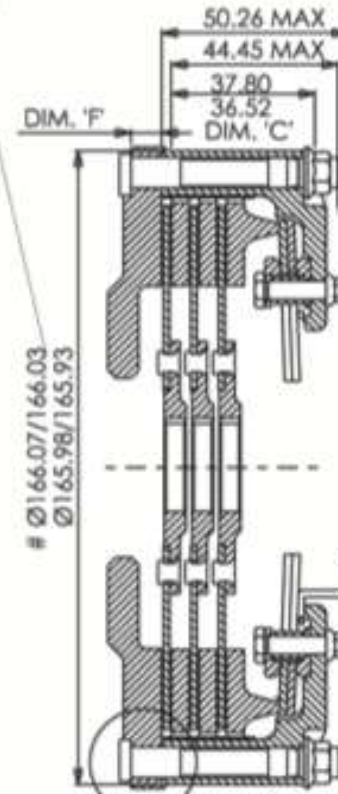


RELEASE TRAVEL TO BE
LIMITED TO 3.80mm
MAXIMUM

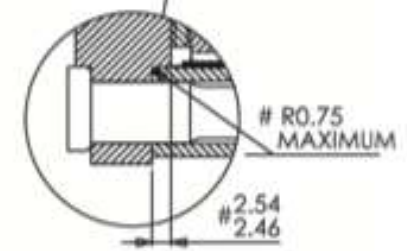
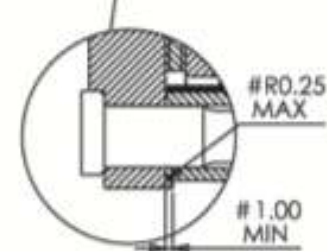
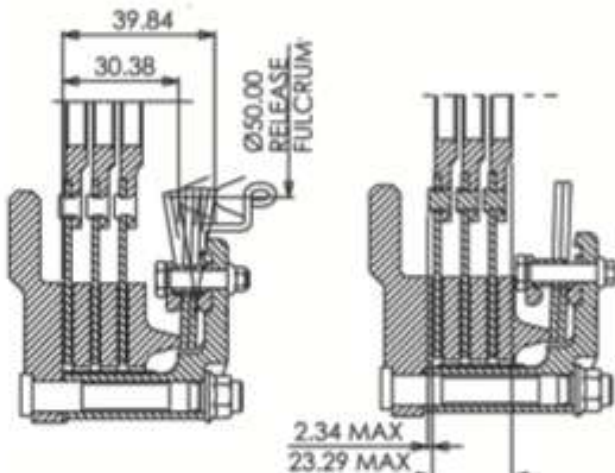
SET UP HEIGHT
(FROM THE FRICTION FACE)

← DIRECTION OF
RELEASE TRAVEL

RECOMMENDED CLUTCH
MOUNTING
(FOR ALL TYPES OF ASSEMBLY
M8X1.0 Cp4702 STUD FAMILY
AND K-LOCK NUT
TIGHTENING TORQUE
19Nm (14 lb/ft)
LENGTH OF STUD REQUIRED TO BE
CALCULATED THUS STUD LENGTH =
'C' + 'F' + ('R' OPTIONAL) + NUT.



INSTALLATION WIRE FOR
USE WHEN INSTALLING A
FLAT FLYWHEEL VERSION.
TO ENSURE FLYWHEEL SIDE
CARBON IS LOCATED ON
THE COVER LUGS
THIS WIRE MUST BE
REMOVED BEFORE USE



Utilisation générale